



Welcome to the Oxfordshire Growth Deal Affordable Housing Launch Event

OXFORDSHIRE

G R O W T H B O A R D

Councillor Roger Cox

Leader: Vale of White Horse District
Council and Vice Chairman of the
Oxfordshire Growth Board

OXFORDSHIRE

G R O W T H B O A R D

Oxfordshire Housing and Growth Deal

Caroline Green



What is the Oxfordshire Housing and Growth Deal

- £215m of Government funding in exchange for housing delivery
 - £150m - infrastructure to enable housing (5 years)
 - **£60m - affordable housing fund (3 years)**
 - £5m - capacity funding
- Commitment to deliver 100,000 homes by 2031 (as in SHMA)
- Joint Statutory Spatial Plan (JSSP) – countywide strategic framework for growth. Complementing Local Plans
- Productivity –to boost productivity and economic growth

The logo for the Oxfordshire Growth Board is located in a white circle on the right side of the slide. It features the word "OXFORDSHIRE" in blue capital letters above the words "G R O W T H B O A R D" in smaller blue capital letters, separated by a thin blue horizontal line.

OXFORDSHIRE
G R O W T H B O A R D

The importance of the Deal

- ▶ The 1st Housing and Growth Deal
- ▶ A down-payment – the first stage in a longer term conversation with Government

“I am impressed with the collaborative approach you have taken to develop the deal. It will be of benefit to local people across Oxfordshire, whilst setting a clear ambition for the potential for growth in the wider Cambridge-Milton Keynes-Oxford.”

Sajid Javid Letter to Council Leaders Nov ‘17

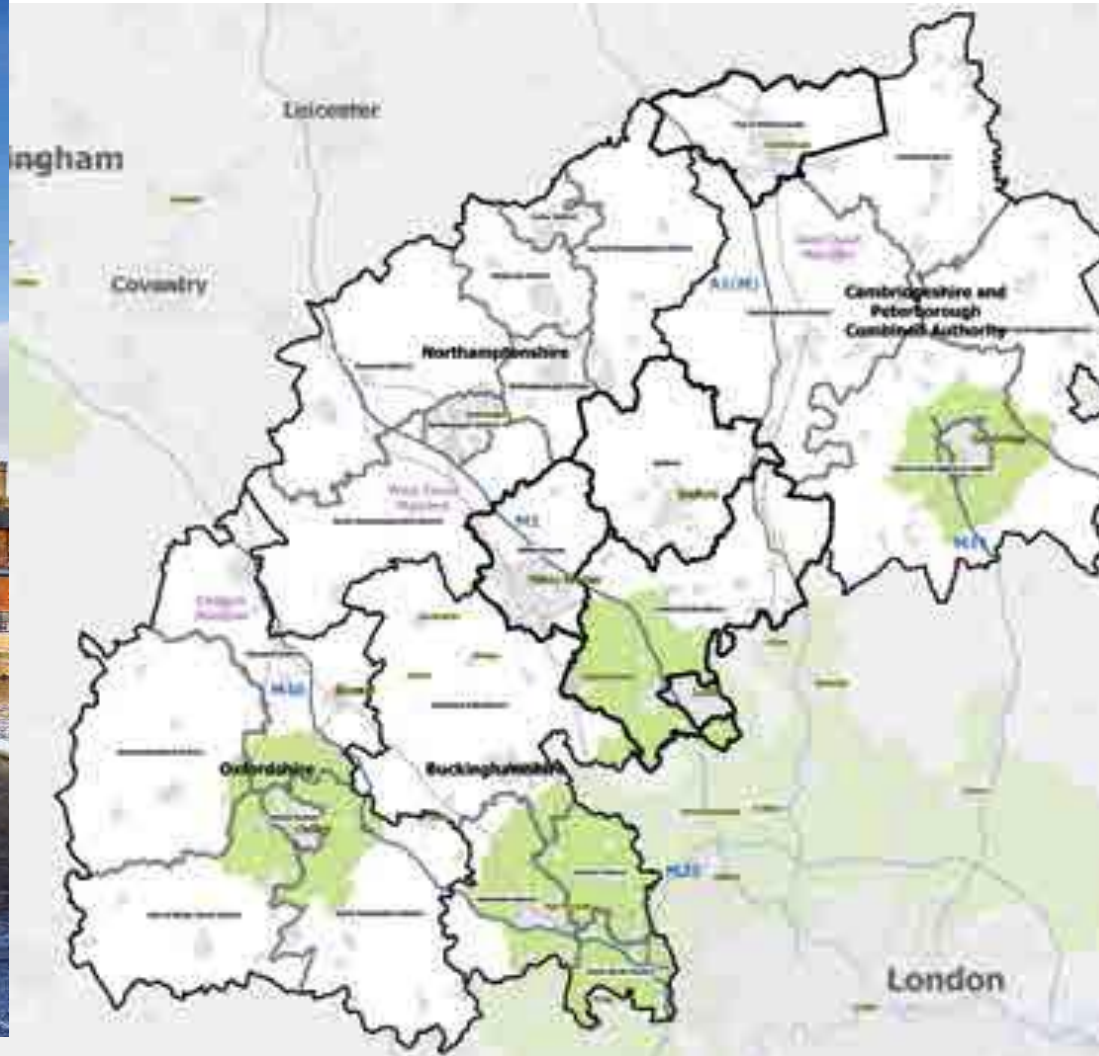
The logo for the Oxfordshire Growth Board is contained within a white circle on a blue background. It features the word "OXFORDSHIRE" in blue capital letters above the words "GROWTH BOARD" in smaller blue capital letters, separated by a thin horizontal line.

OXFORDSHIRE
GROWTH BOARD

Context of opportunity

The Investment Opportunity

The Cambridge - Milton Keynes
Oxford Corridor



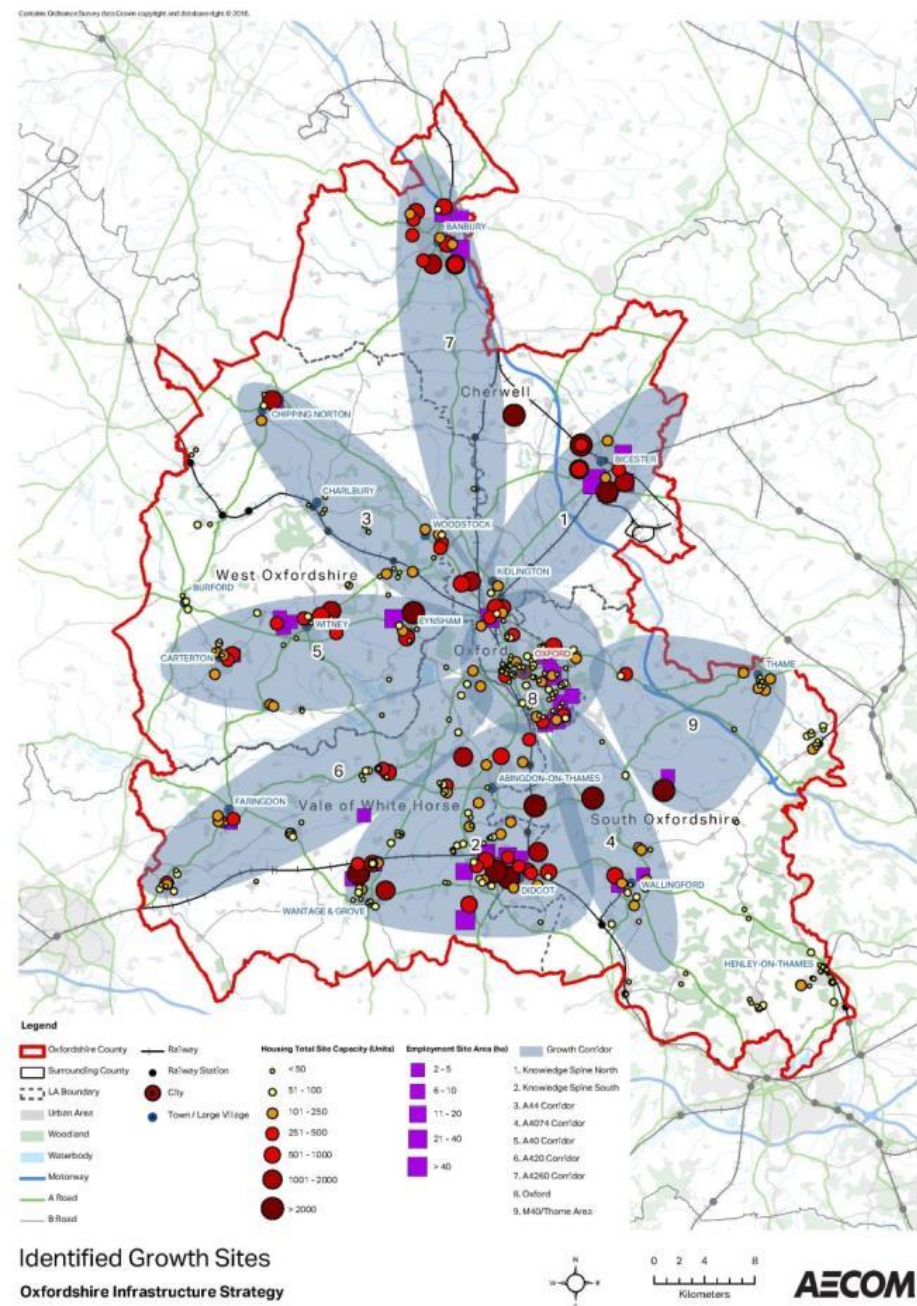
“The Cambridge-Milton Keynes-Oxford Corridor is globally significant and has enormous potential for further economic growth and co-partnership with the private sector”

OXFORDSHIRE
G R O W T H B O A R D

Growth Board's Ambition

A purposeful, long term and collaborative perspective

- a pipeline of investment over time
- policy change and innovation
- best advantage of funding opportunities
- an attractive place for Government, business and the private sector to invest



OXFORDSHIRE

G R O W T H B O A R D

Affordable Housing: What the Deal says

The objective is to :

Increase the number of high quality affordable homes

- **£60m Oxfordshire Affordable Homes Programme**
- **At least 1320 additional affordable homes to (contractual) start on-site by 2021**
- **Agreed Deal milestones:**
 - Year 1 indicative programme by March 2019**
 - Years 2-3 indicative programme developed by end Sep 2018**

The logo for the Oxfordshire Growth Board is located in a white circle on the right side of the slide. It consists of the word "OXFORDSHIRE" in blue capital letters above the words "G R O W T H B O A R D" in smaller blue capital letters, separated by a thin blue horizontal line.

OXFORDSHIRE
G R O W T H B O A R D

Affordable Housing: Our ambition

A step change in affordable housing delivery:

- The Deal programme as the first step
- Creating a legacy
- A range of affordable tenures and types of housing to meet Oxfordshire's needs
- New methods of construction
- New partnerships and models for delivery

The logo for the Oxfordshire Growth Board is contained within a white circle on a blue background. It features the word "OXFORDSHIRE" in blue capital letters above the words "GROWTH BOARD" in smaller blue capital letters, separated by a thin horizontal line.

OXFORDSHIRE
GROWTH BOARD

Affordable Housing programme: principles

- Programme is in addition to Homes England AHP
- Focussed upon additionality- over and above that we can secure through S106
- Agreed average grant rates- detail in prospectus (page 7)
- Payment 90% upon contractual start on site, final 10% upon completion
- Prospectus in your pack, application form available on line www.Oxfordshiregrowthboard.org from tomorrow

The logo for the Oxfordshire Growth Board is contained within a white circle on a blue background. It features the word "OXFORDSHIRE" in blue capital letters above the words "G R O W T H B O A R D" in smaller blue capital letters, with thin horizontal lines on either side of the bottom text.

OXFORDSHIRE
G R O W T H B O A R D

Oxfordshire Housing and Growth Deal

Affordable Housing Funding Prospectus and Funding Policy 2018

Innovation

- We have a baseline programme but we want more!
- New approaches to the product
- New approaches to the delivery of affordable housing
- New ways of us working together to deliver more AH

We want nothing less than to create a legacy that brings a step change in the delivery of the affordable housing that Oxfordshire so badly needs

The logo for the Oxfordshire Growth Board is contained within a white circle on a blue background. It features the word "OXFORDSHIRE" in a bold, blue, sans-serif font, with a thin horizontal line underneath it. Below this line, the words "G R O W T H" and "B O A R D" are written in a smaller, blue, sans-serif font, separated by spaces.

OXFORDSHIRE
G R O W T H B O A R D

Our Challenge to you today is.....

- Engage with us!
- Help us to understand what innovation could look like
- Tell us what your customers want from affordable housing
- Consider how we can best work together in partnership
- Work with us to deliver the ambition!

The logo for the Oxfordshire Growth Board is contained within a white circle on a blue background. It features the word "OXFORDSHIRE" in a bold, blue, sans-serif font, with the words "G R O W T H B O A R D" in a smaller, blue, sans-serif font below it, separated by thin horizontal lines.

OXFORDSHIRE
G R O W T H B O A R D

Questions?

Contact:
Caroline Green: Growth Deal
Director
cgreen@oxford.gov.uk

The logo for the Oxfordshire Growth Board is contained within a white circle on a blue background. It features the word "OXFORDSHIRE" in blue capital letters above a thin horizontal line, with the words "G R O W T H B O A R D" in smaller blue capital letters below the line.

OXFORDSHIRE
G R O W T H B O A R D